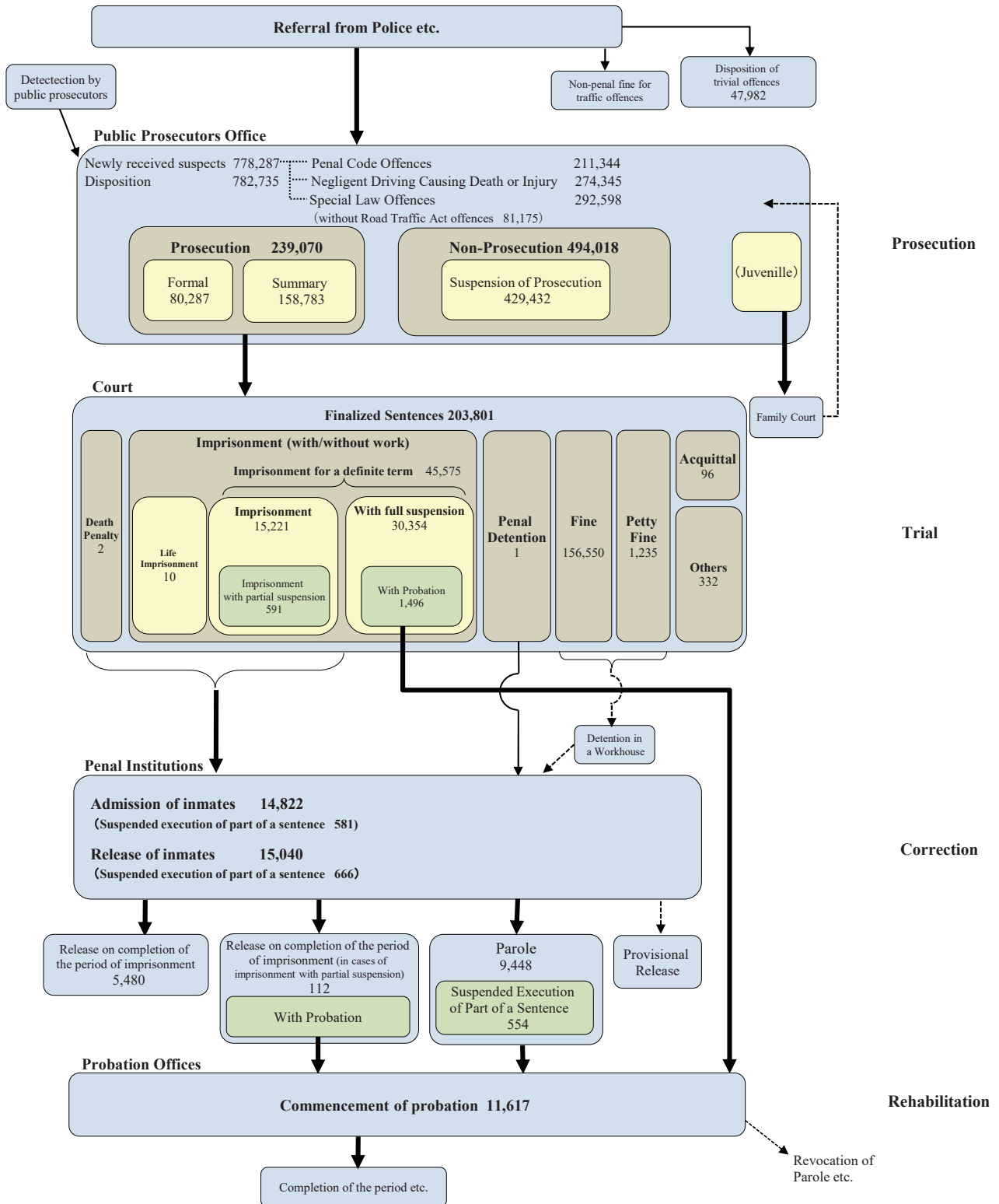


# APPENDIX

## Criminal Justice Flowchart



**Notes:**

1. All data reported in this flowchart indicate the number of persons in 2024, including juveniles, based on the White Paper on Crime 2025.
2. For data under the heading "Public Prosecutors Office," if a same person was processed twice, the number is counted as two persons.
3. "Imprisonment with partial suspension" refers to a sentence under which the offender serves a part of the sentence in a correctional institution, while the remaining part is suspended.